

Tullis



**Professional
laundry**

New laundry,
fit for your business

**lead**
LAUNDRY & CATERING

Small business, higher performance

That is our starting point. To understand that the best way to meet your needs is to adapt to the new businesses and demands which arise in the market.

That is how Compact is born. A new range of professional laundry products specially designed for small establishments (hairdressers', gyms, camp sites, small lodging establishments, etc.) that require the same performance, quality and robustness as the industrial laundry machines, but with **greater versatility, a more compact size and a more affordable price.**



Much more than professional laundry

For us, meeting your needs means going beyond what you already know. It means getting to know you, and understanding that your business, however small, demands that we go further to provide you with machines whose performance is superior to that offered by any other Professional Laundry solution. That is why the new washers and dryers in the Compact range offer performance equal to that of the industrial laundry machines, are more versatile so that you can customise the machines to your needs and space requirements, and are more robust and efficient. And all this while taking up the minimum space possible. Because less has always been more.

01

More
features

02

More
versatile

03

More
robust

04

More
efficient





Professional
high speed

Washer extractor

WH-10 E

Higher performance

- Programmer with Touch Plus (TP2) touch screen. Allows you to create an indefinite number of programs (29 pre-set).
- Allows programming, importing and exporting of programs and software updates via USB.
- Standard traceability: The entire washing process (temperatures, water levels) is stored on the washer and can be extracted to a PC via USB memory.
- Wash-Control, PC software for program management, traceability and other data.
- Designed for multipayment system.
- 8 signals for automatic liquid dosing, programmable in time and delay. 6 extra signals available optionally.
- Shorter washing cycles (6 kW heating power).

More versatile

- New possibility of customising the machines from factory with the available options.
- OPL ↔ Coin Models convertible from selfservice to OPL (Industrial use) and vice versa.
- One unit ↔ Stack Standard model easily installable in stack.
- Electric ↔ Hot water Standard electric model easily convertible to hot water model and vice versa.
- Drain valve ↔ Drain pump Standard models easily convertible. Easy access for maintenance.
- Wet Cleaning included in the scheduler (modifiable water levels and washing speed).

More robust

- Unit in grey sandwich panel
- Tank, drum and paddles in AISI 304.
- Robust door made of aluminium.
- Industrial door lock.
- Industrial machine door seal (no inner drum seal).
- Industrial housing and bearings.
- Industrial variable-frequency drive and motor.

More efficient

- Intelligent and manual weighing system. Automatic adjustment of water and chemicals.
- Possibility of configuring three levels of savings.
- High G-force 450. Reduced residual moisture → Reduces drying time.
- Designed for mounting onto plinth with water recovery tank.

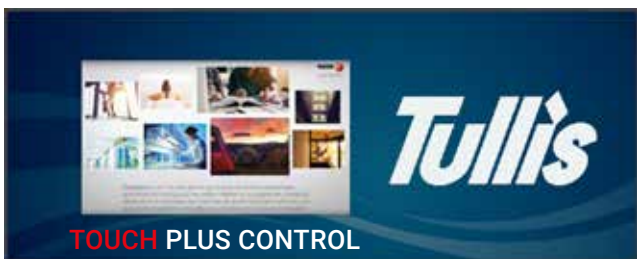
Higher performance

You are in control

All the professional washers and dryers from the Advance range put their intelligent brain, the **Touch Plus Control** processor, under your control. This fully programmable microprocessor includes a multitude of pre-set programs that can be modified during operation, and the ability to create, export and import new programs (USB). Its 4.3-inch touchscreen is very intuitive and easy to use; there are 37 available languages and a USB port for software updates.



The touch screen offers an innovative use that increases income prospects for both self-service laundries and individuals: advertising.



This **Easy Control** electronic brain included in the Concept range dryers features buttons to control the temperature (high, medium and low) and time in a simple, intuitive and economical way. It also offers the option of programming through an external console.



Tranquillity and traceability

The whole wash process (temperatures, water levels) is stored on the washer and can be extracted to a PC via USB memory. PC software free of charge for programming, traceability, data analysis.



Designed for multipayment system

Remote communication ready / Multi-payable systems

The speed you seek

Shorter washing cycles (6 kW heating power).

Shorter drying cycles (less than 45 minutes). 6.75 kW heating; option of 4.5 kW.

8 Automatic liquid dosing signals

8 dosing signals as standard, with programmable time and delay. 6 extra signals extra, available optionally.

Options

- Silicone gasket
- Delayed opening in case of electric power cut
- 'NC' Normally closed drain
- Maritime voltage

Greater versatility

Always made to measure

Possibility of customising the machines to each customer's specific needs out of the options available, delivering them with these options ready installed and checked in the factory.

OPL ↔ Self-service

The machines can be transformed from OPL to Self-Service and vice versa via the TP2 control itself.

OPL



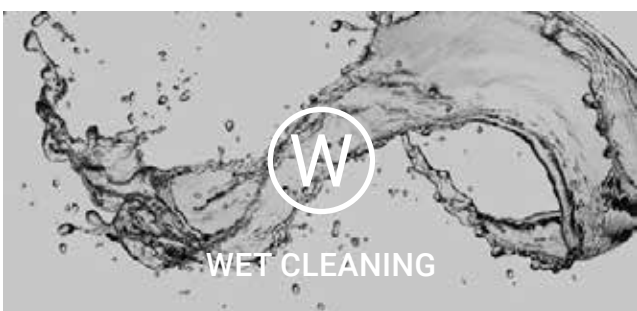
Self-service



Wet Cleaning

Tullis offers the most flexible solution on the market to put a Wet Cleaning solution into practice.

The machines are versatile, with both washers and dryers providing the possibility of creating different phases by program, including all the personalised parameters required by each detergent supplier in the Wet Cleaning industry.



Space Saving

The range of compact washers and dryers are very advantageous with their reduced dimensions, and in view of their load capacities and stackable options, making them a good solution for small spaces.

Separate machine ↔ Stacking machine

The standard model is easily installable as part of a stack. A washer can be stacked with a dryer even if they have been ordered separately as separate machines.



Multiple sectors

The Compact range is suitable for many different sectors, such as

- Restaurants
- Kindergartens
- Gyms
- Apartments - Residential
- Campsites
- Auto-service laundries
- Mop Cleaning
- Cleaner shops

Electric ↔ Hot water

Standard electric model easily convertible to Hot water model and vice versa

Electricity supply

Stock imported at 230V Single phase 50 Hz.
Other available options: 230 V I, 230 V III, 400 V III and 50/60 Hz.

More robust

Robust construction

Embossed front and side panels in **stainless steel grey** skin plate, stainless steel look in.

Advantages

- Reinforced stamped front & side panels
- Elegant look
- Easy to clean
- No fingerprints



Top quality materials

The tank, drum and paddles are made of AISI 304 stainless steel as in the industrial washers, providing higher quality and resistance to external agents. This prevents premature oxidation, extends useful life and provides better quality.

Bearings, bearing housings, motor and variable-frequency drive are equivalent to the industrial machines.

The dryers have an industrial filter of large dimensions and an industrial fan with strong air flow.

- 65% of components as used in industrial laundry machines
- The heaviest washer extractor in its class
- Robust aluminum door
- Stainless Steel AISI-304 made inner & outer drum
- Stainless Steel AISI-304 made ribs
- No muffle. No inner drum seal. Simplicity of repair, clean, more industrial, etc.
- Industrial house bearing and bearings (Up to 15,000 working hours)
- Same motor as industrial washer
- Same inverter as industrial washer
- Industrial door lock system

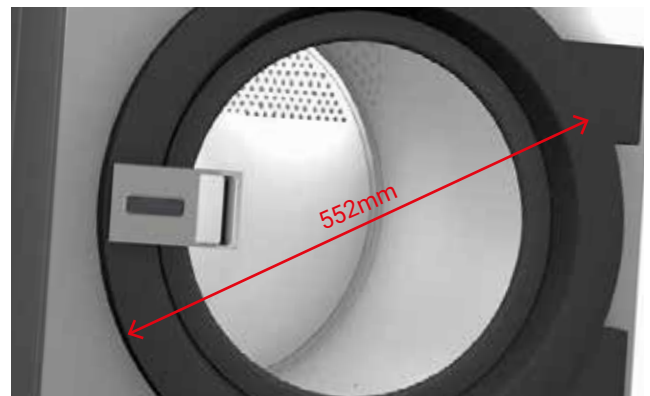
Built for you

Our machines have been designed with the user's convenience in mind. To that end, one of the factors indicated in their construction has been to give all the washers the largest door dimensions on the market.

The professional washers have the largest door dimensions on the market, with a diameter of **516 mm** on the outside and **373 mm** on the inside. Easy loading and unloading of laundry.



The dryers have the largest door diameters on the market in their segment, **552 mm**.



Options

Stainless steel AISI-304 panels

More efficient

In your wash

Optimal consumption

With two weighing systems: one manual, reporting the inserted load to the machine directly, and the other intelligent, where the machine makes an estimate of the load at the beginning of each program.

Additionally, the degree of savings can be set at three levels depending on the washing requirements.

OPTIMAL LOADING (standard)

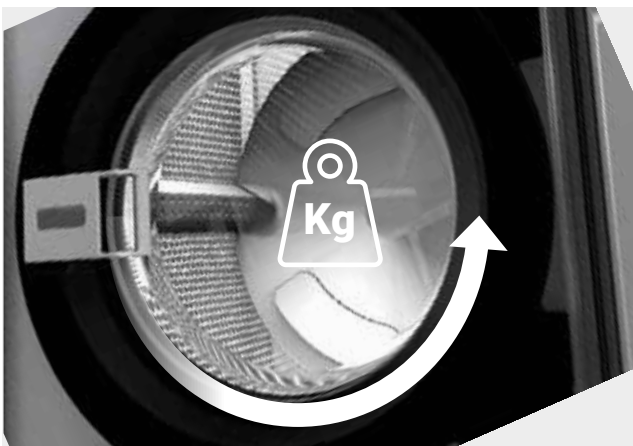
Automatic adjustment of water and soap consumption (standard) according to **manual indication of the loaded weight**, by the user.

INTELLIGENT LOADING (standard)

Automatic adjustment of water and soap consumptions as well as energy savings, according to the estimated load which is measured by the washer based on the water absorption.

Advantages

- Energy savings
- Water savings
- Chemical savings



G-force 450

The high G-force 450 reduces residual moisture and therefore drying time.

Imbalance detection system

An advanced technological development enables the washers to detect load imbalance in advance and use the variable-frequency drive to carry out the best spin. Smoother work (less noise) lengthens the life of all components. Reduction of washing times and energy savings.

Optional Extra

Water recovery tank

Possibility of integrating a water recovery tank into a specially designed base.

This option is managed from the TP2 control itself, where the user can recuperate the water from the required phase.



PLINTH FOR WASHING DUST MOPS

Plinth with filtration drawer, easy to remove and clean.

WATER RECOVERY TANK

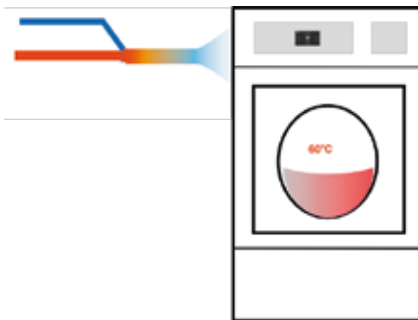
More Detail

Automatic water mixer

Precise mixing of the different water temperatures, thanks to accurate temperature sensor on the drum.

Advantages

- Energy savings
- Reduced washing time



Wet Cleaning ready

All features available to use during wet cleaning programs:

- Fully programmable control
- Precise control of temperatures and levels of water.
- Washing speed adjustable very low (13 r.p.m.)
- Rhythm on/off of 3sec/40sec
- Manual control of each dosing signals



Soap dosing system

- Water ducts, as well as easy detergent connection complies with the WRAS certification
- Rear connections for automatic liquid dosing. Up to 8 dosing signals (Option 6 extra signals)

Advantages

- Accurate dosing (time and delay)
- Up to 14 dosing signals as maximum



Small perforations in the ribs of the drum

Water has a cascade effect on the load

Advantages

- Maximises the washing quality with the shortest cycle time possible
- Increases mechanical action considerably inside the drum
- Reduces the need of water

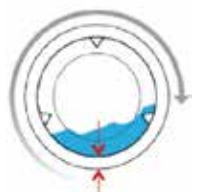


Drum and tub's efficient design

A narrow gap between drum and tub prevents overuse of chemicals and water

Advantages

- Reduces the energetic consumption to heat up the water
- Increases mechanical action considerably inside the drum
- **Low consumptions < 8,2 litres / kg of linen** with standard program (60°, 1 prewash + 1 wash + 3 rinses)



Inbalance system

Thanks to an advanced technological development, and by means of the inverter, the washers detect the imbalance at an early stage.

Advantages

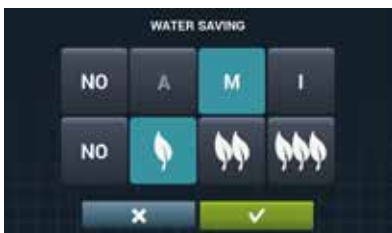
- Operation is much smoother, making components long-lasting
- Reduced washing time
- Energy savings



Water saving

The purpose is to reduce the water, energy and detergents consumption based on the load. There are 3 levels of saving:

- 1 leaf** : It only acts on dosing, reducing the programmed duration of signals, based on the load.
- 2 leaves** : It acts on dosing and water in a moderate way, slightly reducing the levels and duration of programmed signals, based on the load.
- 3 leaves**: It acts on the dosing and water in a more efficient way, reducing levels and duration of programmed signals according to the load.



Technical menu and safety devices

Complete technical menus:

- Failure self-diagnosis systems (Auto-test)
- Alarms
- Saving of information (cycles, time working, spinning, alarms, etc.)
- Restricted Access areas

Voltage

- Models 230V single-phase
- All washers are 50Hz

Traceability - Hygiene

All washing process (Temperatures, water levels) are stored in the washer and can be downloaded from USB port. Statistics are especially important for safety reasons (RABC)

Advantages

- Maintain customer trust and confidence
- Data for liability claim protection
- Data integrity
- Respond quickly in case any malfunction



Safety latch on door

Advantages

- Safe and robust door lock design
- Easy to close and open



Certificates and homologations

- WRAS approvals (UK)
- ETL certificate (USA and Canada)
- CB



Characteristics and technical data

Characteristics

- User-friendly and totally programmable TP2 microprocessor with a 4,3" touch screen
- 8 dosing signals as standard. 2 water inlets
- USB Connection: PC software free of charge for programming, traceability, data analysis
- Traceability as standard
- Wet cleaning standard with the TP2: water levels and speed are modifiable
- Remote communication ready
- Multi-payable systems

Technical Data

	UNIT	WH-10 E
DRUM		
Load capacity 1:9 / 1:10	kg	11/10
Volume	l	100
Diameter	mm	532
Depth	mm	425
GENERAL DATA		
Wash / spin speed	r.p.m.	50 / 1,250
G Force	-	450
Maximum force transmitted	kN	1.57 ± 0.53
Dynamic force frequency	Hz	18.33
Self-service version	-	Yes
Double drain	-	No
Noise level	dB	<70
Weighing system / Tilt system	-	No/No
DOOR		
Height door centre / Height door base	mm	537 / 280
Diameter	mm	373
POWER		
Motor	kW	0.75
Heating power	kW	6
Total electric power (elec. m.)	kW	6.25
Total electric power (hot water m.)	kW	0.75
DIMENSIONS - DIMENSIONS WITH PACKAGING		
Width	mm	680 / 710
Depth	mm	742 / 832
Height	mm	1,040 / 1,130
Net weight - Gross weight	kg	150 / 160

High speed - G-Force 450

Control type	Heating	Drain type	Capacity
Touch Plus Control (TP2) microprocessor	Electric	Drain pump	WH-10 E

NOTE: Can be transformed to self-service mode with coin mechanism or mobile cashless services.

- Soft mounted washers, free standing
- R.P.M. 1250

Advantages

- Easy to install. Fixing to the floor not required, no extra costs
- Savings because of the high extraction of water (40 - 45% residual humidity).

SA's first complete payment solution for the laundry industry



Mobile cashless payments

Integrate or replace your coin mech with LaundryConnect and enjoy the convenience of cashless services and hassle-free operations.

- Track sales real-time
- Support customer queries quickly, effectively & remotely
- View performance of your machines & understand why transactions failed, remotely
- Improve pricing offers & track inflation
- No more cash theft & handling fees
- Easy to Implement
- Easy 30min installation
- Reliable
- Convenient vending experience

Coin laundries

- No more collecting and counting coins
- Eliminates security risk of cash on-site
- No more hassle of token management/replacement
- No more costly coin mech malfunctions
- No more loss of business due to coin rejection, rejection of foreign coins or cash boxes being full
- Full control over prices – improve pricing & track inflation
- More management control – tracking utilisation and controlling abuse.

Non-coin laundries

- Ideal for all forms of accommodation, universities, apartment blocks, drop-off laundry services
- Allocate limited wash cycles to individuals and charge for over-use
- Add a card system or integrate an existing card
- Drop off services – allocate and track staff usage
- Apartments – Track who is using and bill accordingly
- Track machine abuse to individuals.





Tullis

16 Pressburg Road
Modderfontein
Johannesburg
Ph: +27 (0)11 553 3700

228 Oliver Tambo Road
Hamilton
Bloemfontein
Ph: +27 (0)51 448 5042

10 Imola Place
Westmead, Pinetown
Durban
Ph: +27 (0)31 792 4800

37 Columbus Crescent
Rivergate Business Park
Parklands
Cape Town
Ph: +27 (0)21 527 4020

Unit 3, Riverside Circle
9 Water Lily Crescent
Riverside
Nelspruit
Ph: +27 (0)13 010 1240

90 Mangold Street
Newton Park
Port Elizabeth
Ph: +27 (0)41 1804312

Unit 8 Barleo Park
Kudugas Street
Northern Industrial Area
Windhoek, Namibia
Ph: +26 (4)83 330 9793

www.lead.co.za
sales@lead.co.za

**lead**
LAUNDRY & CATERING

World Leading Equipment Brands
World Leading Installation & After Sales Service

FAGOR 









